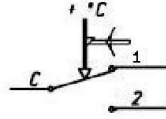
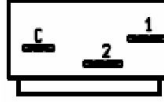
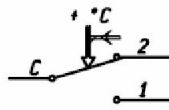
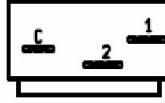


Connections

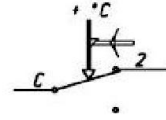
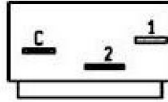
HC... SPDT



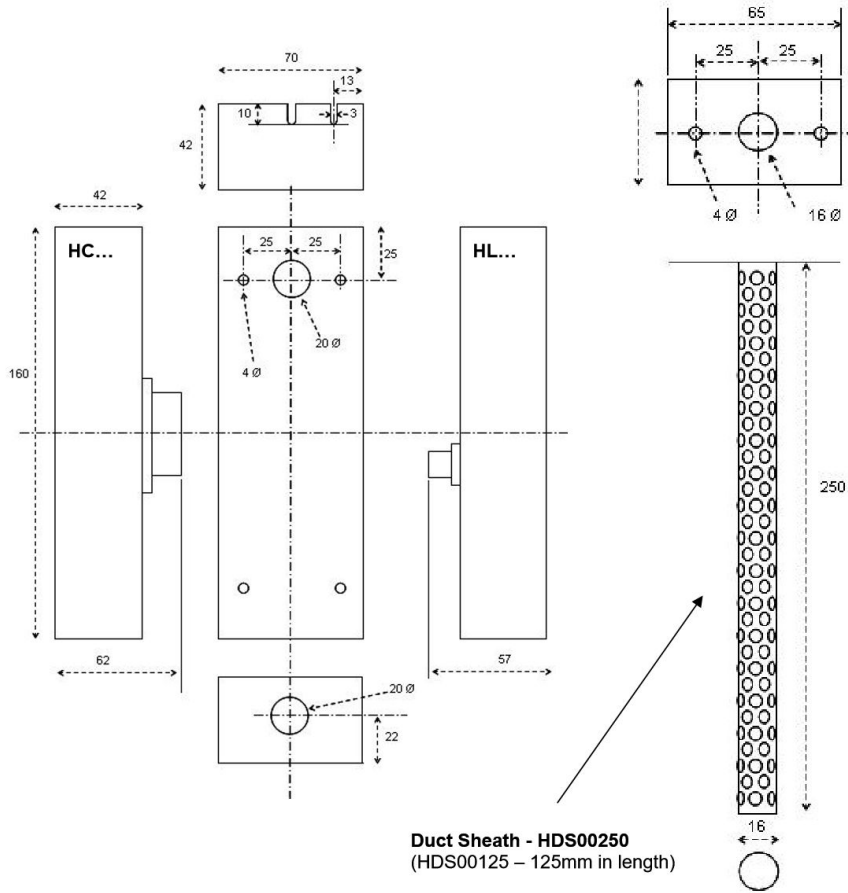
HL... SPDT



HL... SPST



Dimensions



Duct Sheath - HDS00250
 (HDS00125 – 125mm in length)

Technical Data

Thermostat	HCE940010	HCE940030	HCE940160	HL_302632	HLE341510	HLE342196
Contacts:	250Vac max.					
Terminal 1	15(2.5)A max.		0.5A max., N.I.		n/a	0.5A max., N.I.
Terminal 2	6A max., N.I.		10(2.5)A max.		15(2.5)A max.	
Body temperature:	85°C max.		80°C max.			
Bulb temperature:	150°C max.	70°C max.	150°C max.	95°C max.	125°C max.	135°C max.
Capillary bending radius:	5mm min.					
Capillary diameter:	1.5mm					
Bulb dimensions:	95mm x 6.5mm	92mm x 9.5mm	95mm x 6.5mm	140mm x 6mm	95mm x 6.5mm	75mm x 6.5mm